

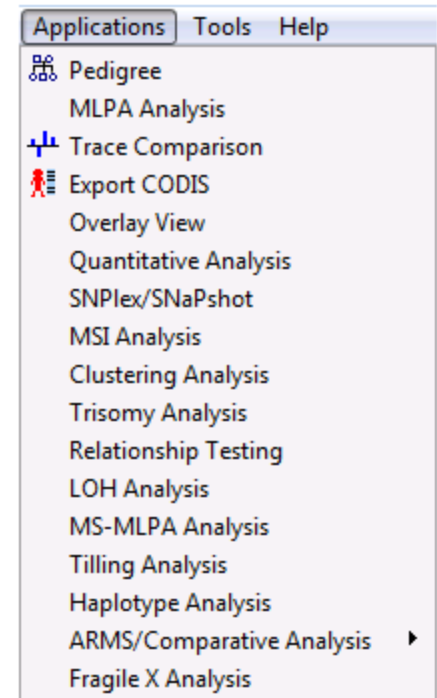
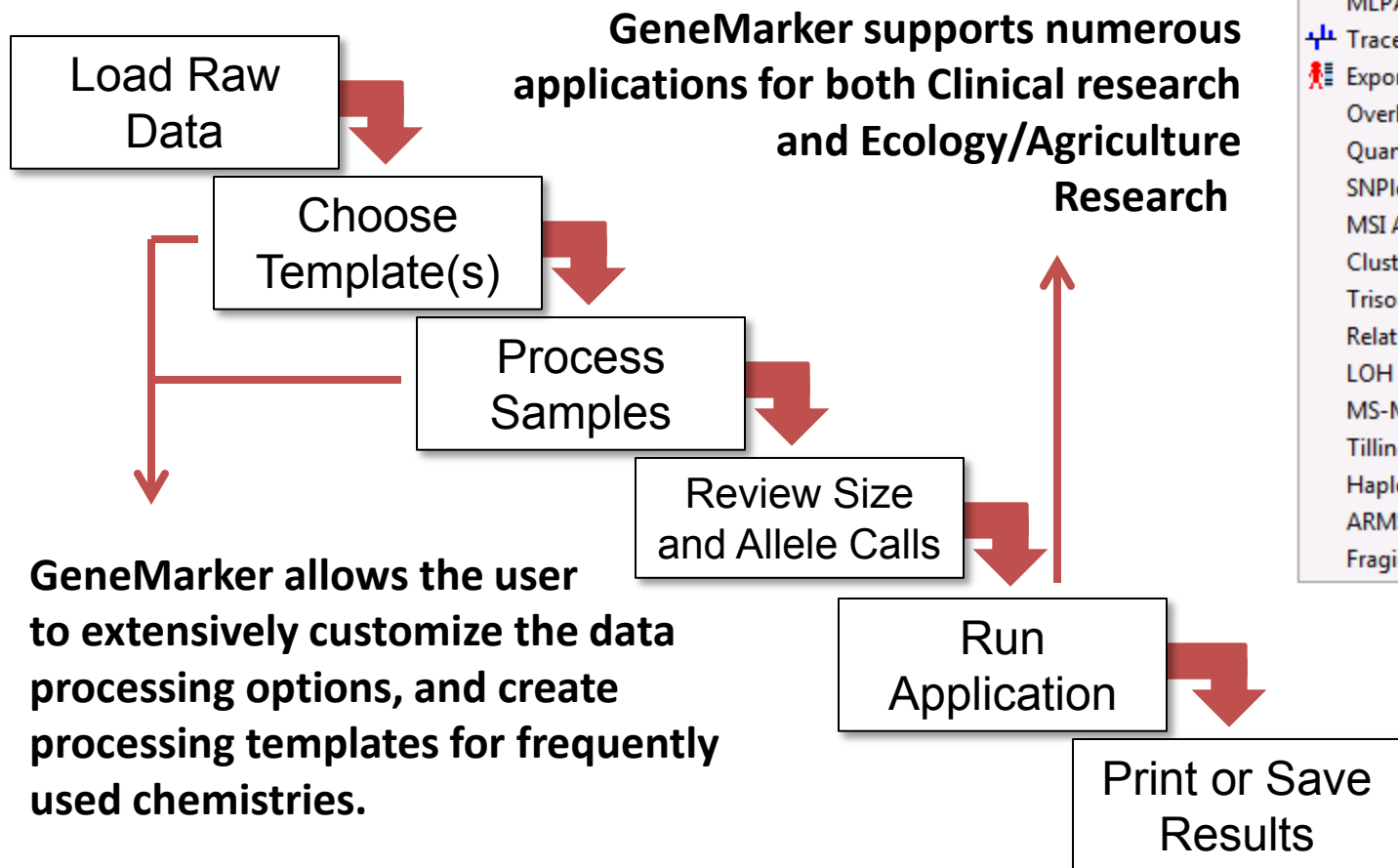


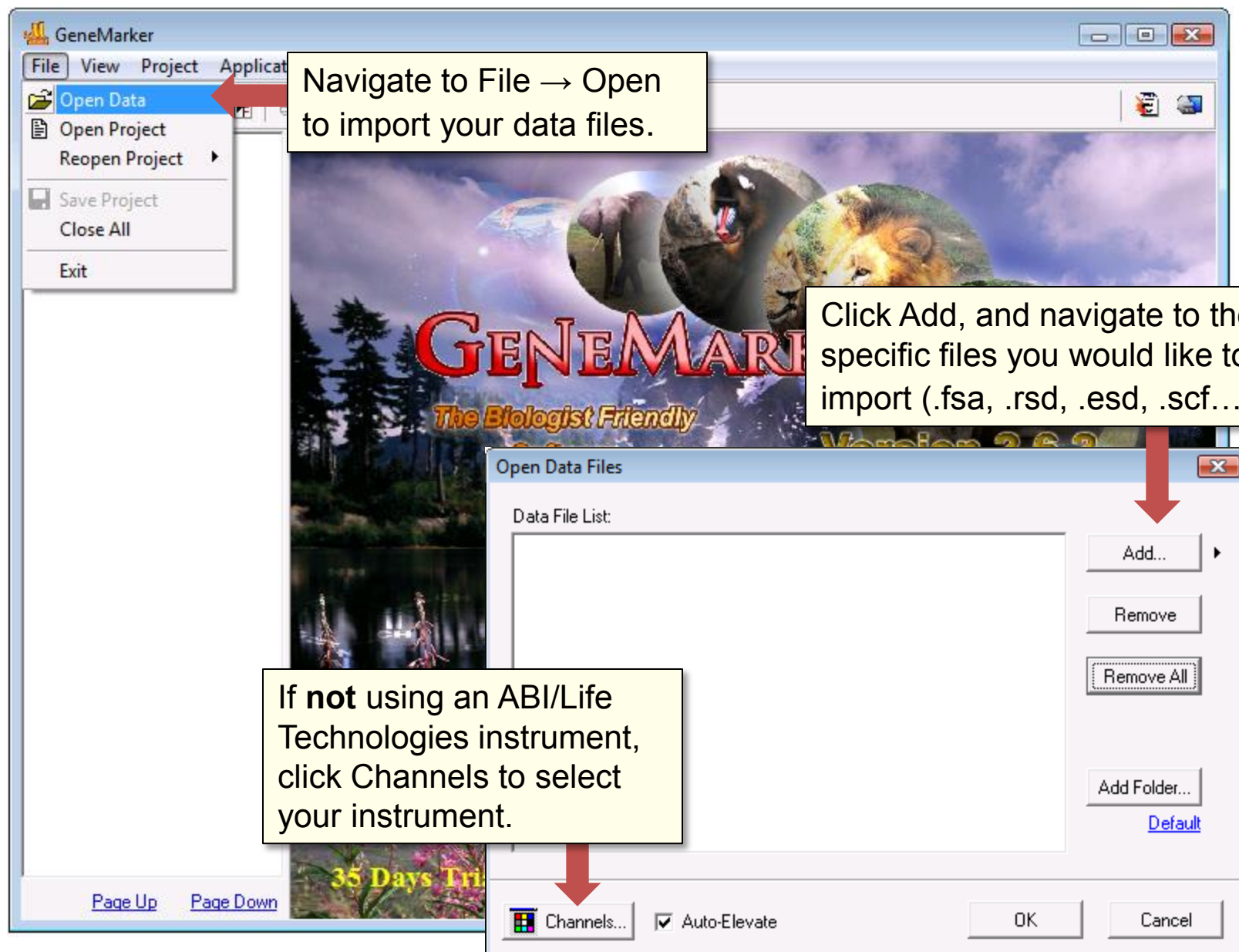
GeneMarker

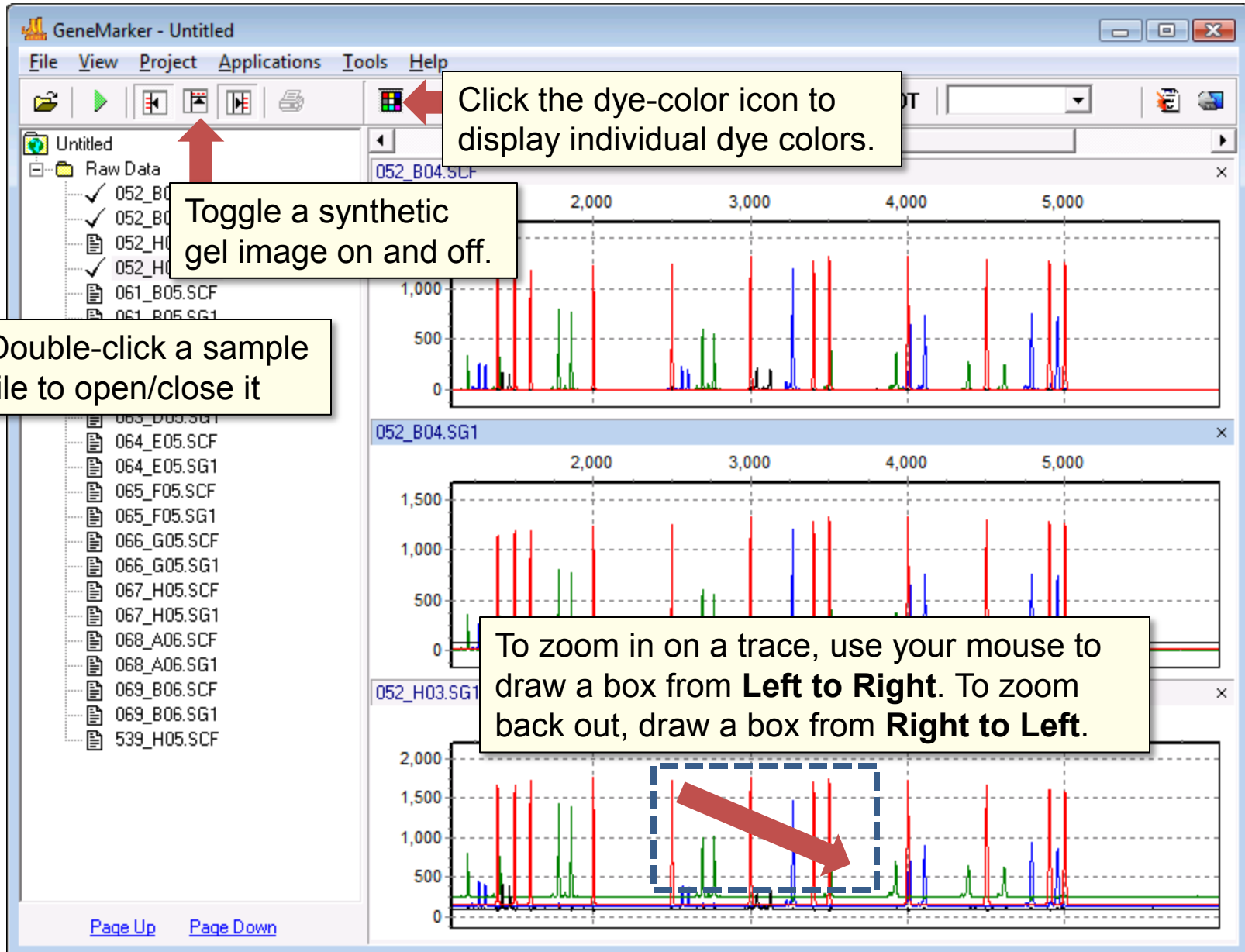
Quick Start Guide



GeneMarker Workflow





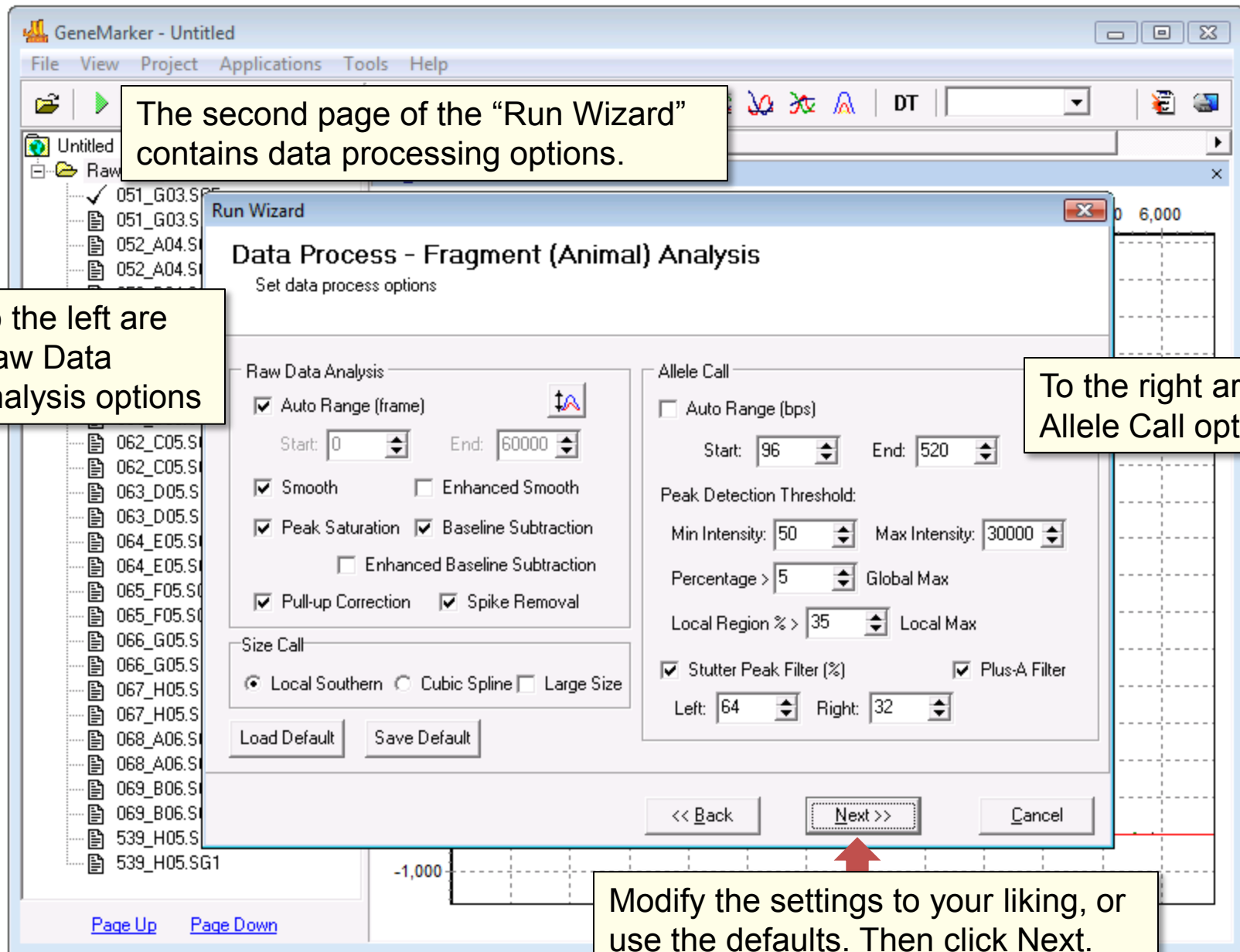


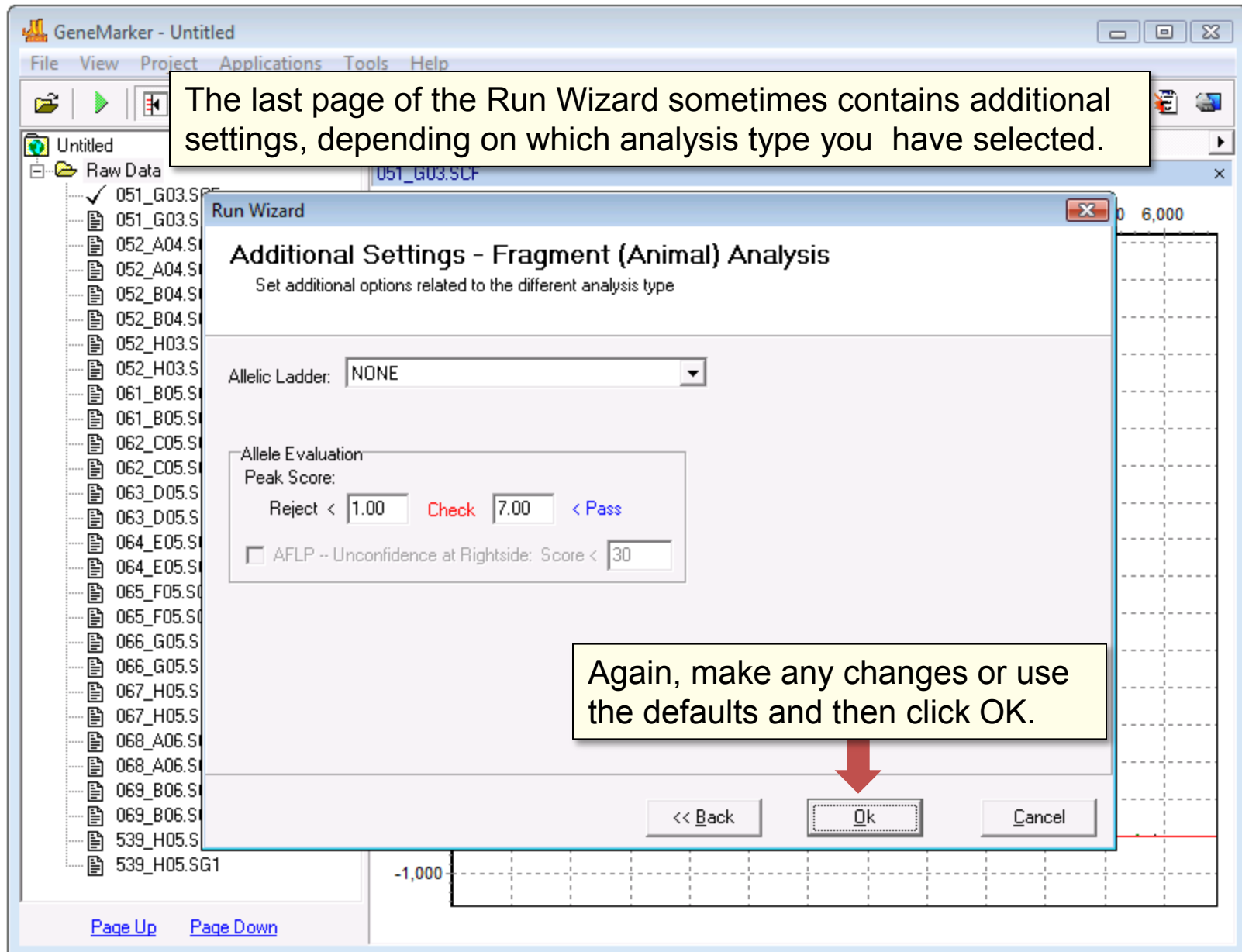
The screenshot displays the GeneMarker software interface. The main window is titled "GeneMarker - Untitled" and has a menu bar with "File", "View", "Project", "Applications", "Tools", and "Help". Below the menu bar is a toolbar with icons for file operations and analysis. A red arrow points to the green triangle icon in the toolbar, with a callout box stating: "To process your samples, (size and allele calling), click the green triangle icon, or navigate to Project → Run."

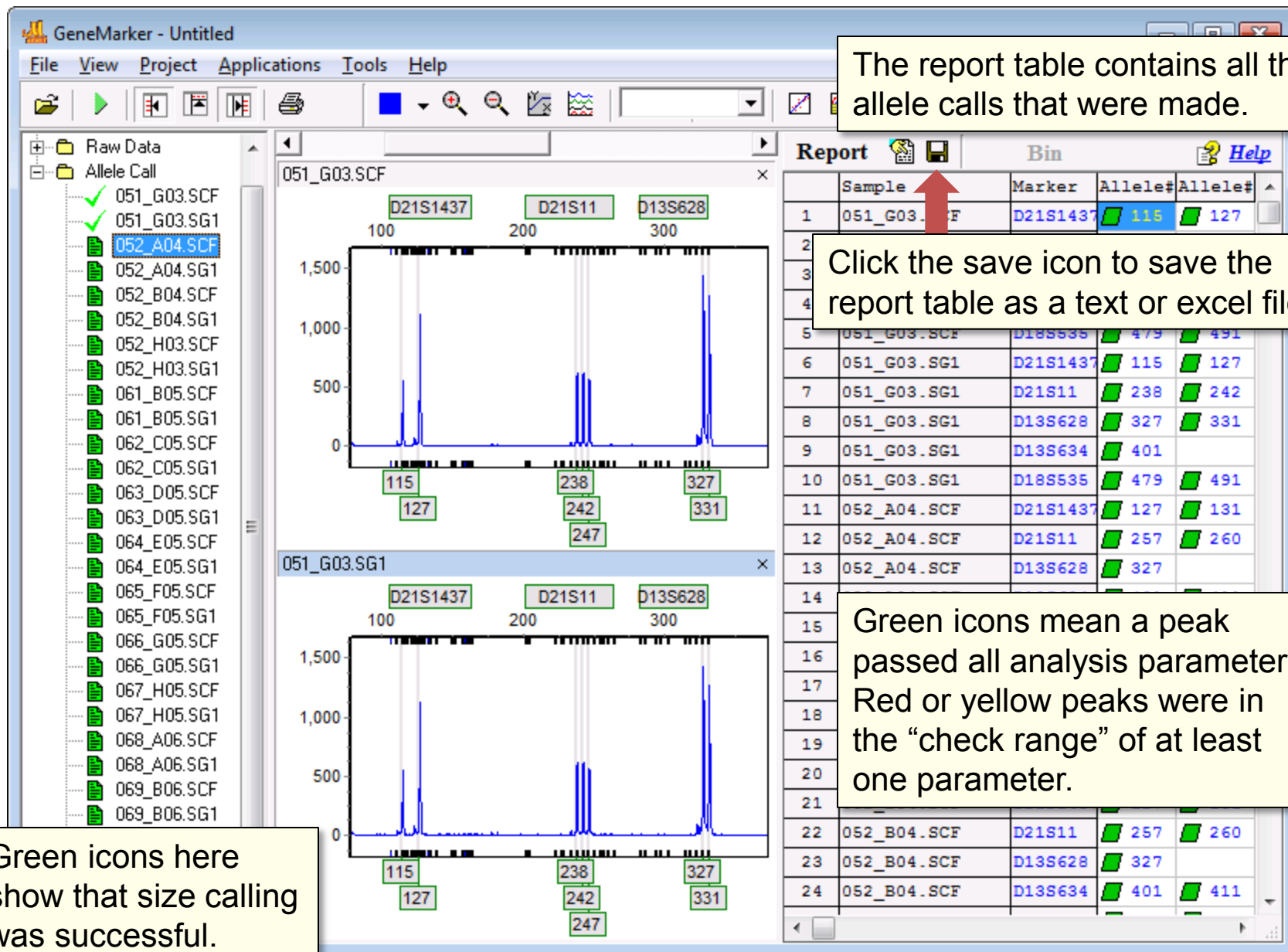
The "Run Wizard" dialog box is open, showing the "Template Selection" step. It prompts the user to "Set the template of the project". Under the heading "Select an existing template or create one", there is a list of templates: "_Trisomy", "AFLP", "FragileX", "LOH", "Microsatellite_Dinucleoti", "MLPA", "mPCR", and "MCL". The "_Trisomy" template is selected. To the right of the list, there are input fields for "Template Name" (set to "_Trisomy"), "Panel" (set to "Trisomy_Panel"), "Size Standard" (set to "GS500"), "Standard Color" (set to "Red"), and "Analysis Type" (set to "Fragment (Animal)"). A callout box points to these fields, stating: "Select your panel, your size standard, standard color, and analysis type."

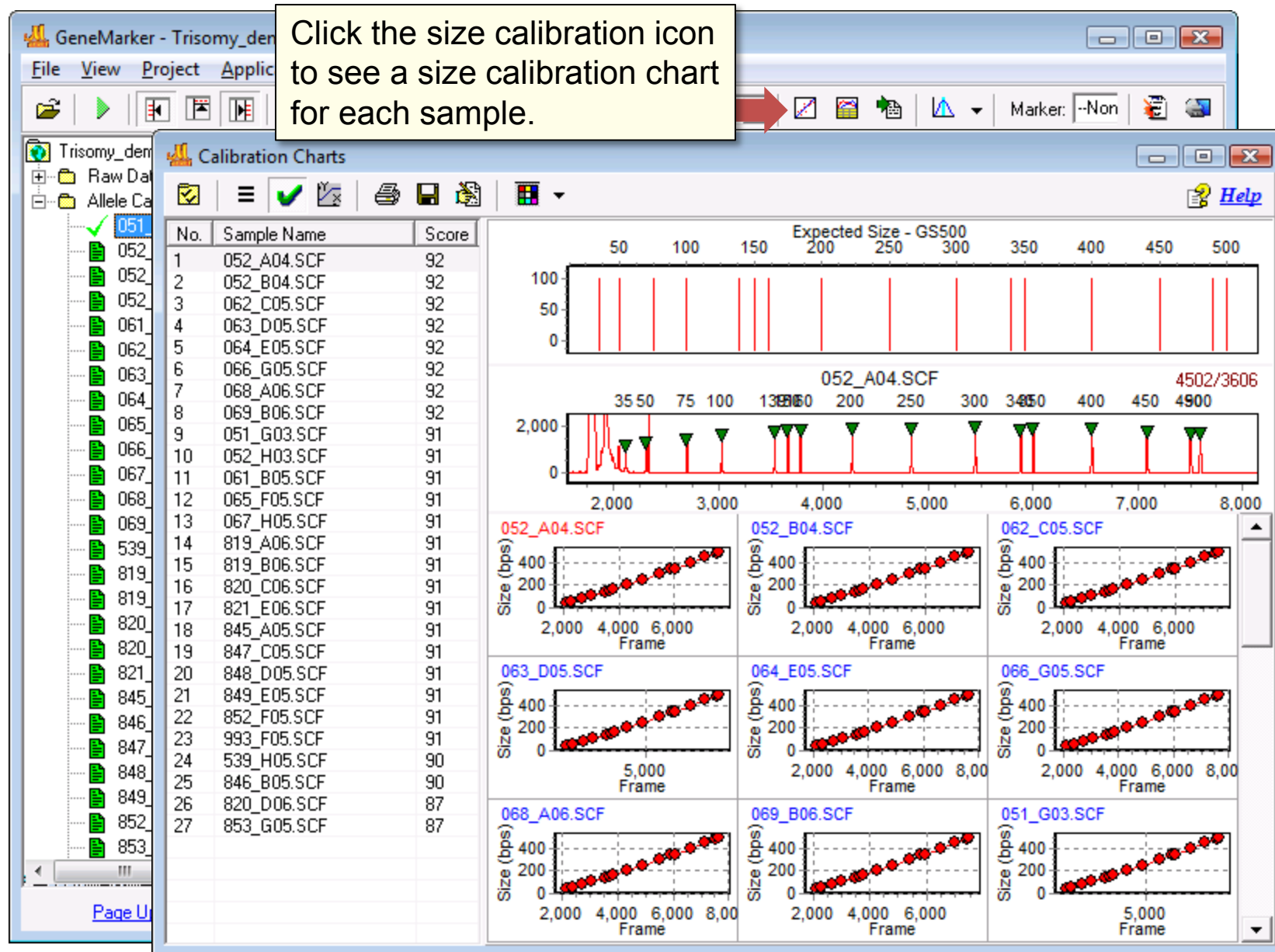
At the bottom of the dialog box, there are buttons for "<< Back", "Next >>", and "Cancel". A red arrow points to the "Save" button, with a callout box stating: "Input a new template name a click Save to create a new template."

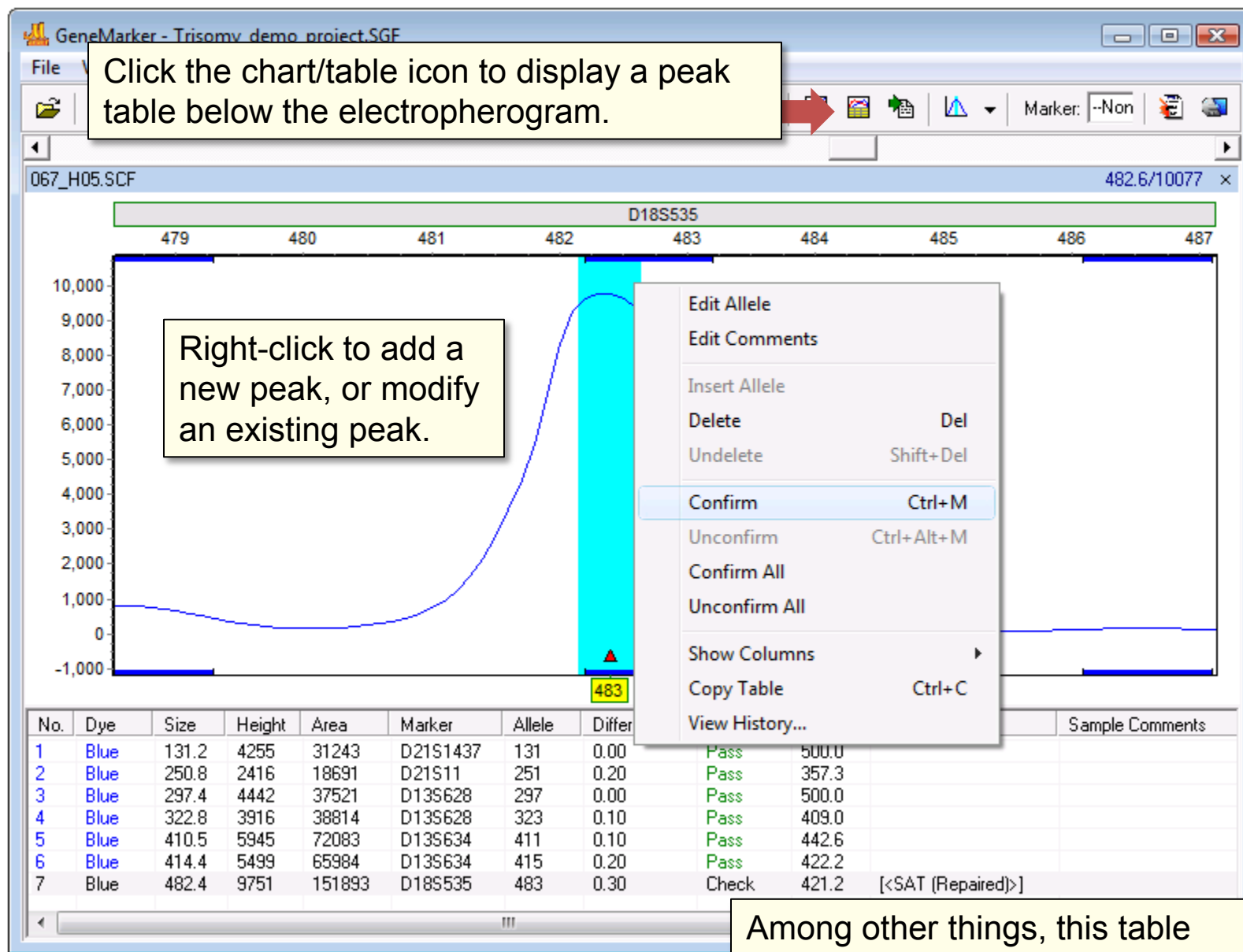
On the left side of the main window, there is a file explorer showing a folder named "Raw Data" containing several files. A callout box points to the "Raw Data" folder, stating: "Or select a pre-saved template".

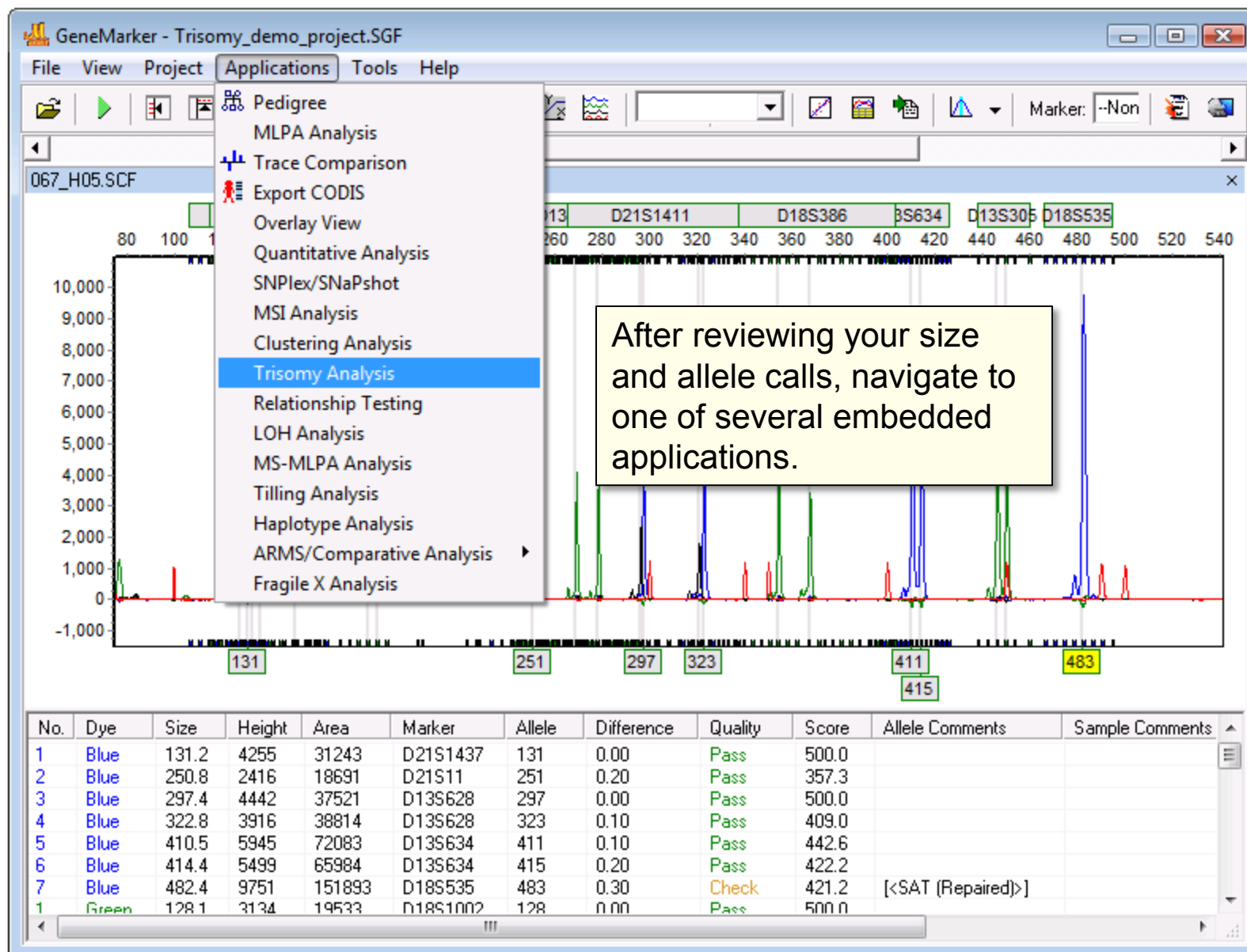


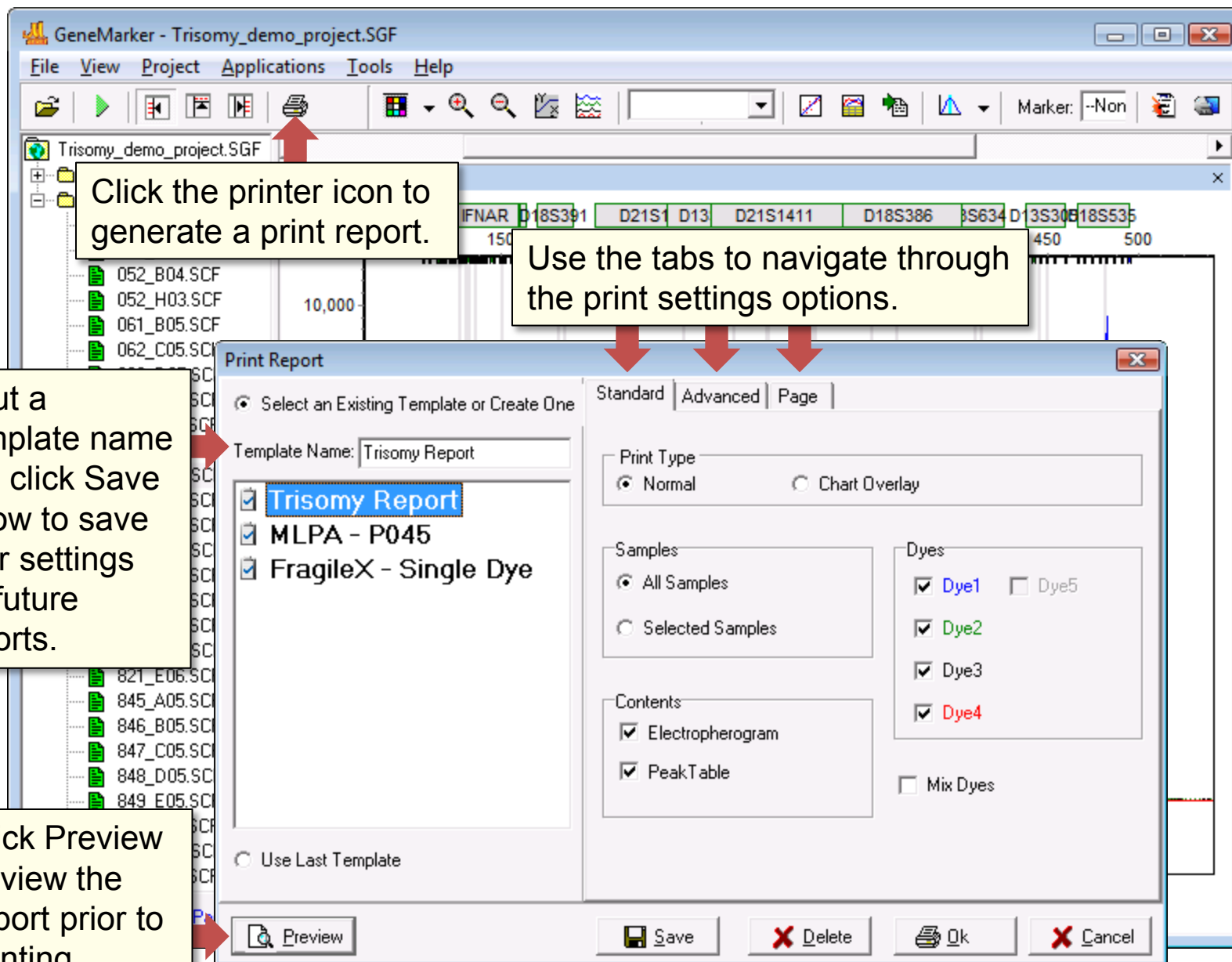






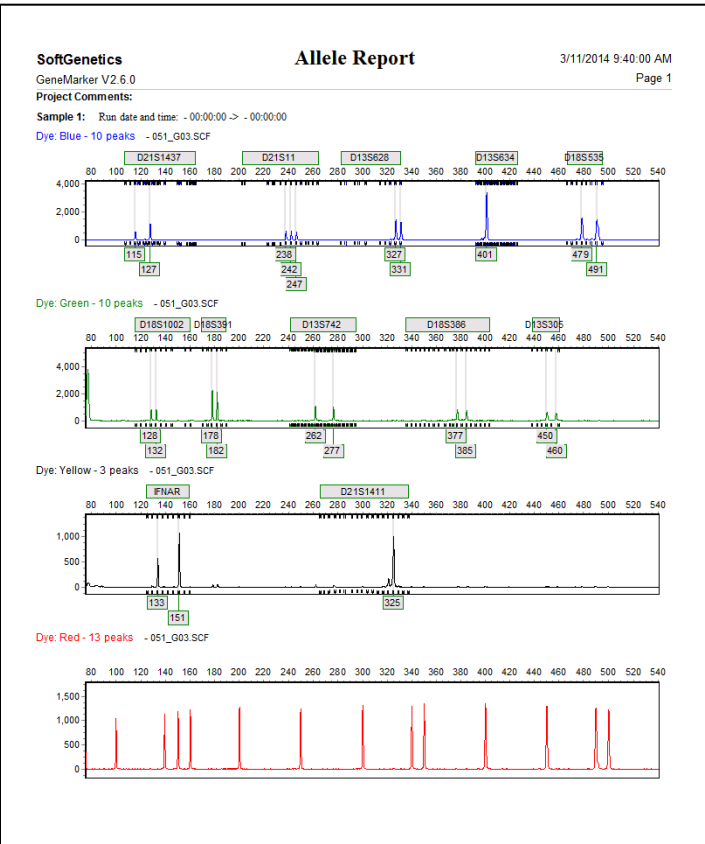




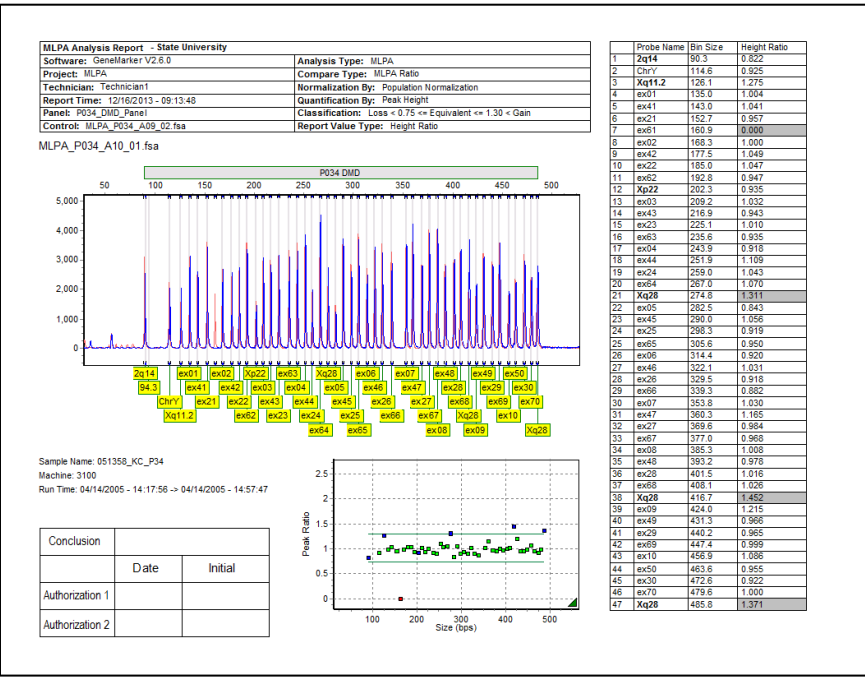


Gene Marker Supports Numerous Reporting Options

Below are two example reports that can be generated in GeneMarker. Each post-genotyping application has its own unique report format that can be extensively customized. Reports can be printed directly or saved as PNG and JPG image files.

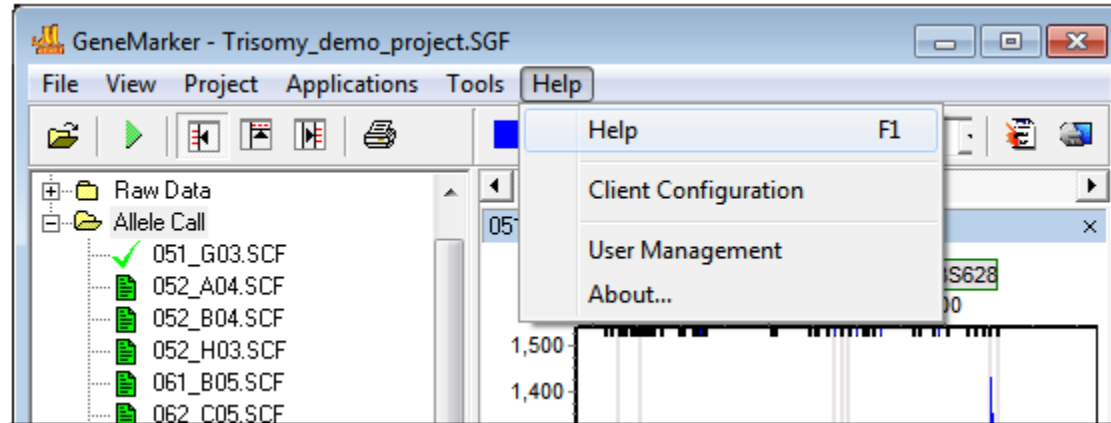


A typical print report from one of the many post-genotyping applications (MLPA):



Need Assistance?

Access the User Manual anytime by navigating to Help > Help



You can view webinars on GeneMarker here:
http://softgenetics.com/GeneMarker_reference.html

Or, Please Email: tech_support@softgenetics.com

Or Please Call: 814-237-9340

GeneMarker

The Biologist Friendly Software

Trademarks are the property of their respective owners. Research use only (RUO).